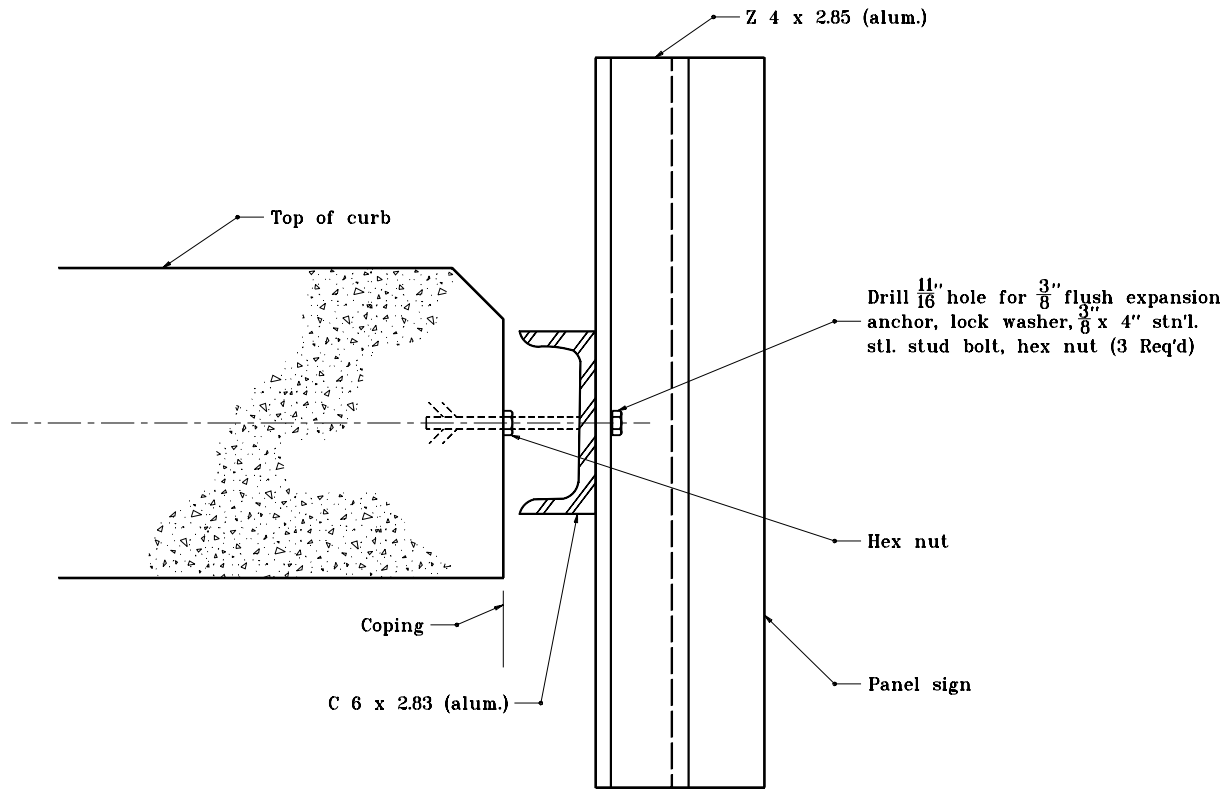
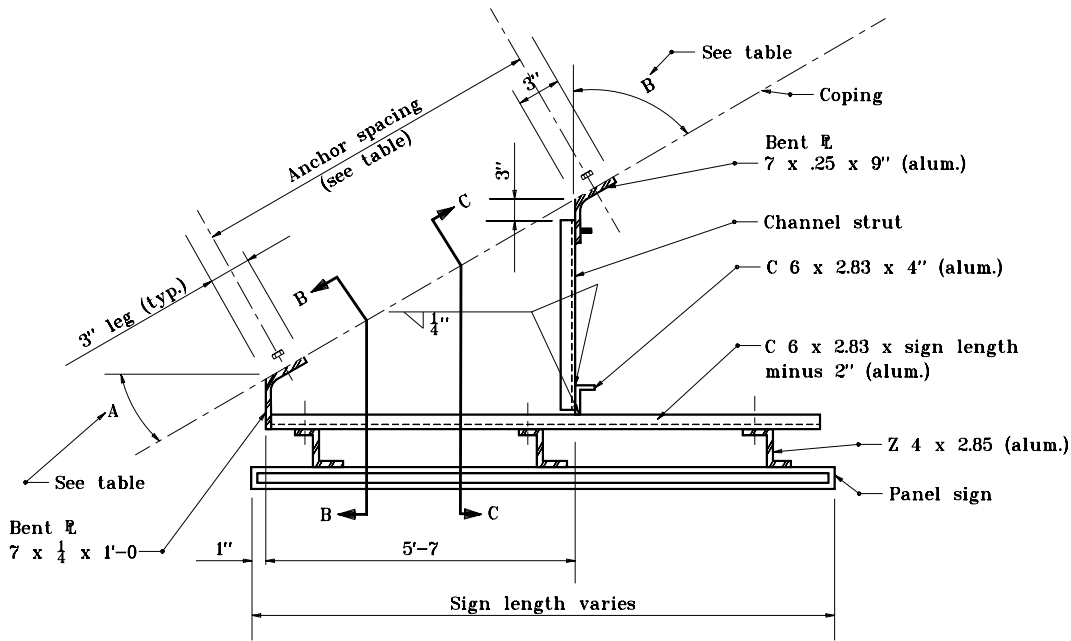


**PLAN (TYPE A)**  
**0° CONNECTION**



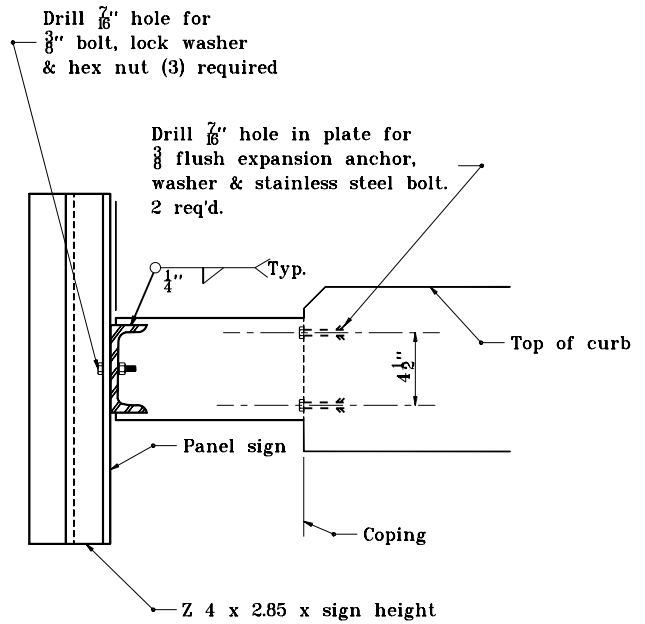
**SECTION A-A**

INDIANA DEPARTMENT OF TRANSPORTATION	
BRIDGE BRACKET ASSY. FOR CROSSROAD SIGNING	
SEPTEMBER 2001	
STANDARD DRAWING NO. E 802-SNBB-01	
	/s/ Anthony L. Uremovich 9-04-01 DESIGN STANDARDS ENGINEER    DATE
	/s/ Firooz Zandi 9-04-01 CHIEF HIGHWAY ENGINEER    DATE
DESIGN STANDARDS ENGINEER	



**PLAN (TYPE A)**

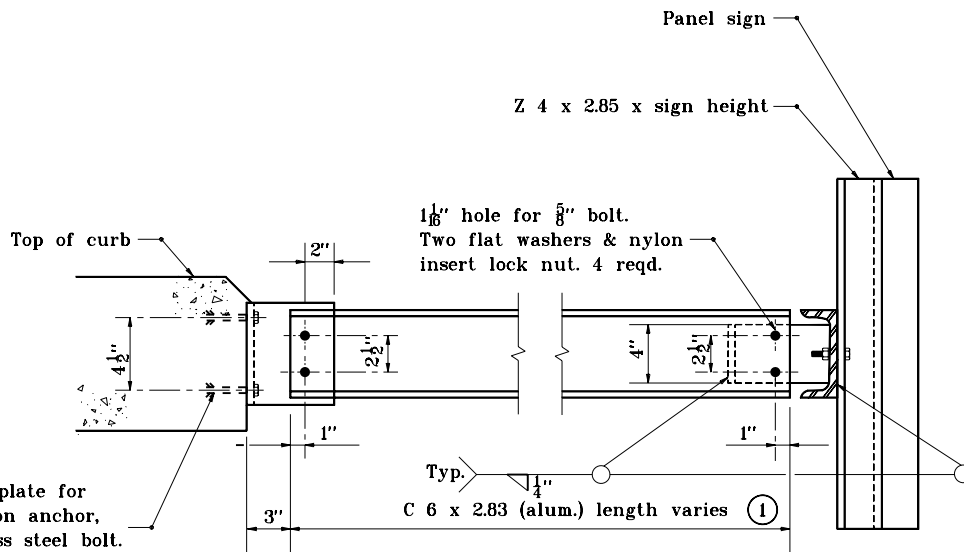
**10°, 20°, 30°, & 40° CONNECTIONS**



**SECTION B-B**

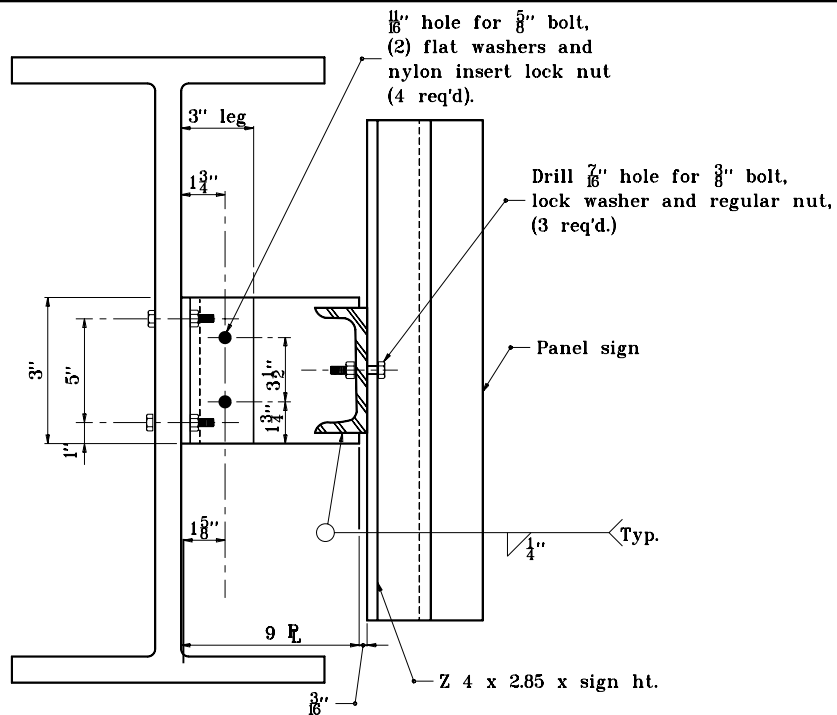
**GENERAL NOTES**

① See Standard Drawing E 802-SNBB-05 for table.

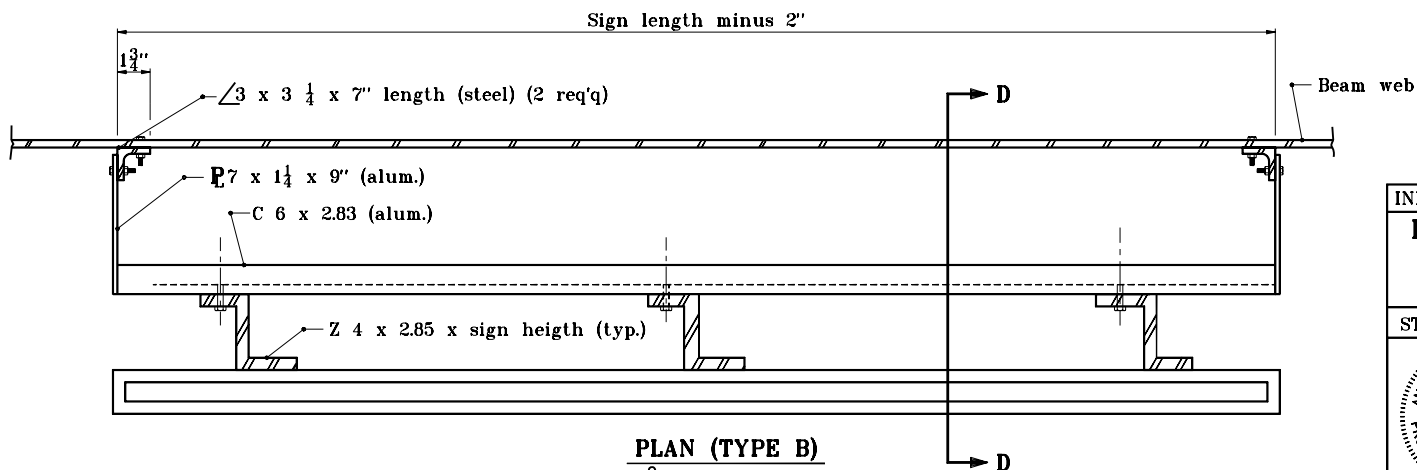


**SECTION C-C**

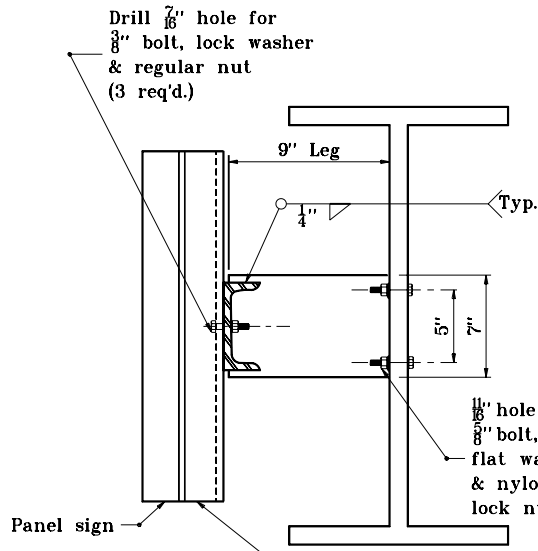
INDIANA DEPARTMENT OF TRANSPORTATION	
BRIDGE BRACKET ASSY. FOR	
CROSSROAD SIGNING	
SEPTEMBER 2001	
STANDARD DRAWING NO. E 802-SNBB-02	
	/s/ Anthony L. Uremovich 9-04-01 DESIGN STANDARDS ENGINEER DATE
	/s/ Firooz Zandi 9-04-01 CHIEF HIGHWAY ENGINEER DATE
DESIGN STANDARDS ENGINEER	



**SECTION D-D**



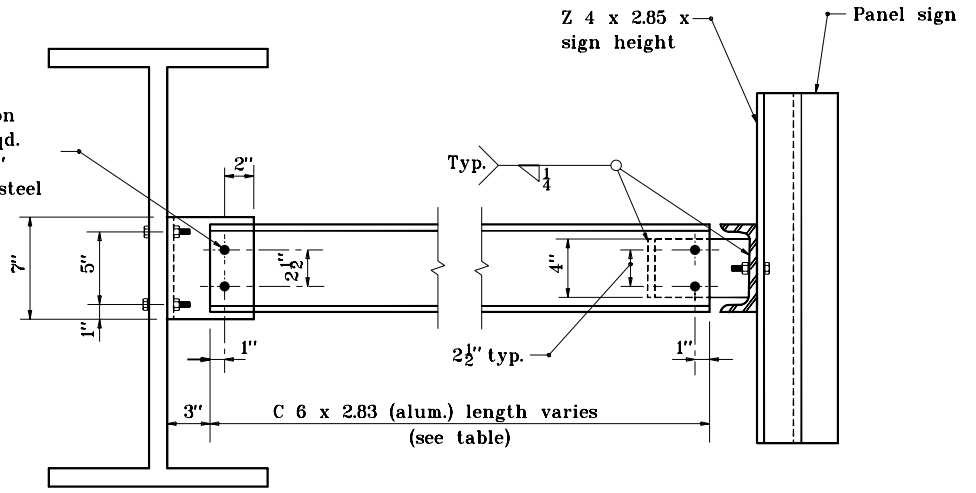
INDIANA DEPARTMENT OF TRANSPORTATION	
<b>BRIDGE BRACKET ASSY. FOR CROSS-ROAD SIGNING</b>	
SEPTEMBER 2001	
STANDARD DRAWING NO. E 802-SNBB-03	
	/s/ Anthony L. Uremovich 9-04-01 DESIGN STANDARDS ENGINEER DATE
	/s/ Firooz Zandi 9-04-01 CHIEF HIGHWAY ENGINEER DATE
DESIGN STANDARDS ENGINEER	



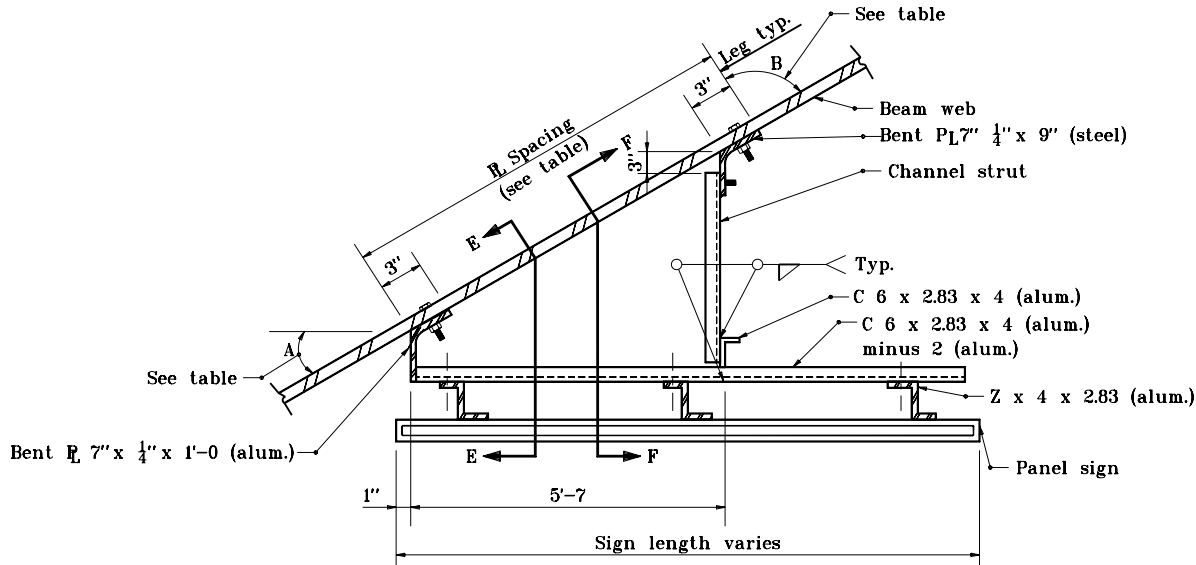
**SECTION E-E**

1/16" hole for 5/8" Bolt  
(2)- flat washers & nylon insert lock nut. (4)- reqd. place plastic material, 1/16" min. thickness between steel & aluminum surfaces.

1/16" hole for 5/8" bolt, (2) flat washers & nylon insert lock nut. (2 req'd).



**SECTION F-F**



**PLAN (TYPE B)**

**10°, 20°, 30°, & 40° Connections**

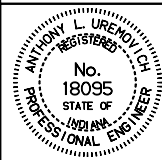
INDIANA DEPARTMENT OF TRANSPORTATION	
<b>BRIDGE BRACKET ASSY. FOR CROSSROAD SIGNING</b>	
SEPTEMBER 2001	
STANDARD DRAWING NO. <b>E 802-SNBB-04</b>	
	/s/ Anthony L. Uremovich 9-04-01 DESIGN STANDARDS ENGINEER DATE
	/s/ Firooz Zandi 9-04-01 CHIEF HIGHWAY ENGINEER DATE
DESIGN STANDARDS ENGINEER	

**TYPE A & B BRIDGE CONNECTION TABLE**

SKEW	CONNECTION (ANGLE A)	ANGLE B	CHANNEL STRUT LENGTH	ANCHOR SPACING	PLATE SPACING
0° - 10°	0°	—	—	—	—
10° - 20°	10°	80°	C 6 x 2.83 x 1'-4 $\frac{3}{4}$ "	5'-6	5'-11
20° - 30°	20°	70°	C 6 x 2.83 x 2'-5 $\frac{1}{4}$ "	5'-11 $\frac{1}{2}$ "	6'-2 $\frac{1}{2}$ "
30° - 40°	30°	60°	C 6 x 2.83 x 3'-7 $\frac{1}{2}$ "	6'-5 $\frac{1}{2}$ "	6'-8 $\frac{1}{2}$ "
40° - 50°	40°	50°	C 6 x 2.83 x 5'-1 $\frac{1}{4}$ "	7'-3 $\frac{3}{4}$ "	7'-6 $\frac{1}{2}$ "

**GENERAL NOTES**

1. Bottom edge of sign shall be horizontal when erected and shall be a minimum of 1'-6 above the bridge beam flange at all points.
2. All  $\frac{3}{8}$ " bolts used with  $\frac{3}{8}$ " expansion anchors shall be 1 in. long ( $\pm 0$  ") and shall engage expansion anchors of 1 1/2 times the bolt dia. or 9 threads minimum except for Type A 0° connections to bridge fascia. The contractor may use either type A or B.

INDIANA DEPARTMENT OF TRANSPORTATION	
<b>BRIDGE BRACKET ASSY. FOR CROSSROAD SIGNING</b>	
SEPTEMBER 2001	
<b>STANDARD DRAWING NO. E 802-SNBB-05</b>	
	/s/ Anthony L. Uremovich 9-04-01 <small>DESIGN STANDARDS ENGINEER      DATE</small>
<small>DESIGN STANDARDS ENGINEER</small>	/s/ Firooz Zandi 9-04-01 <small>CHIEF HIGHWAY ENGINEER      DATE</small>